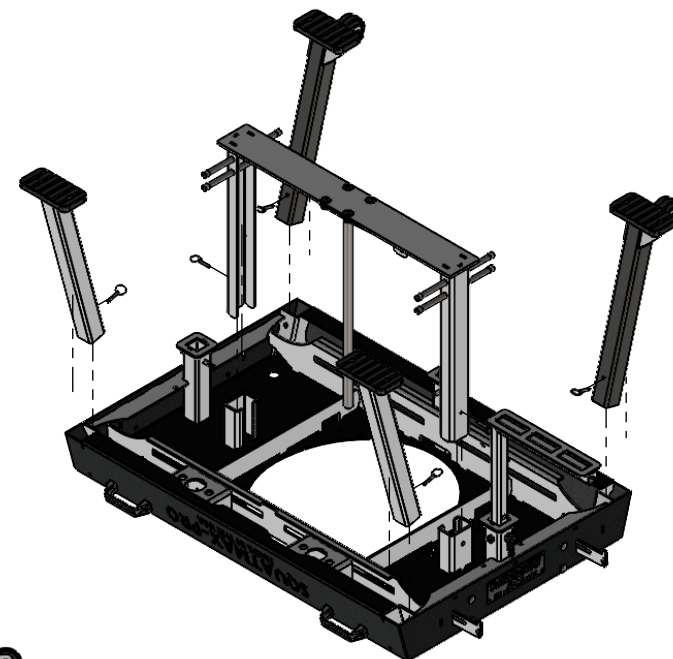
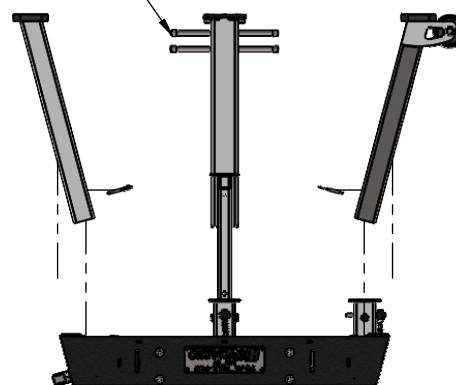
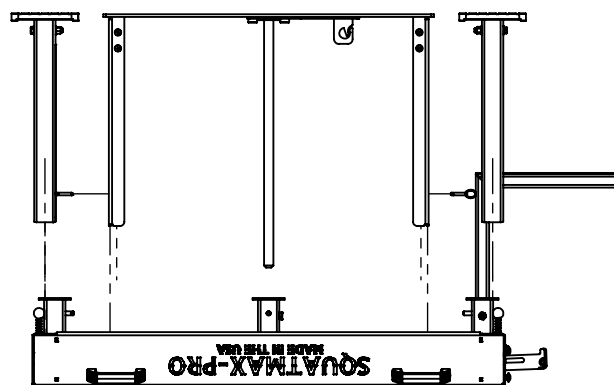



STEP 1:

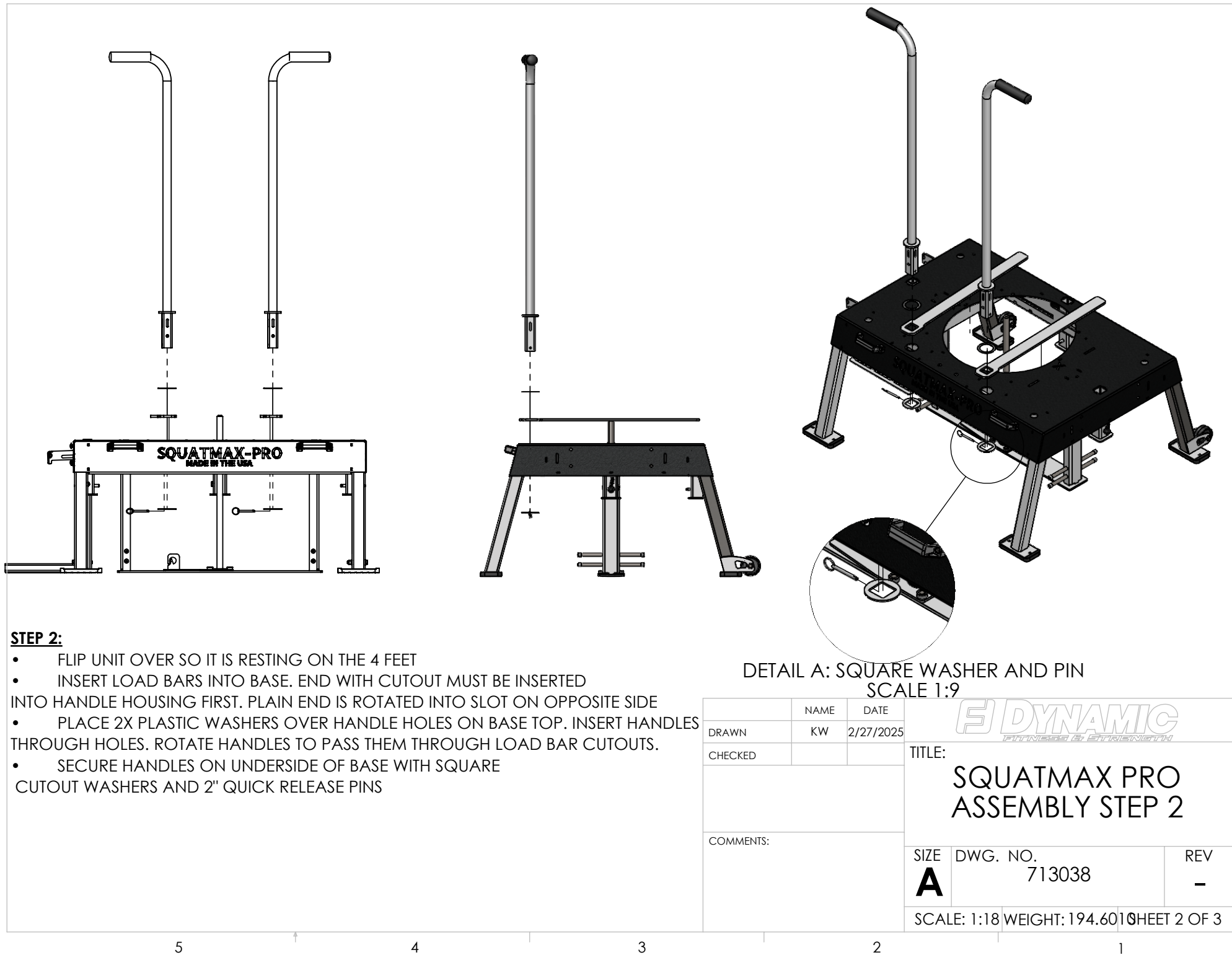
- POSITION BASE WITH TOP FACE DOWN AND ONE END PROPPED UP ENOUGH FOR THE LOAD PIN TO PROTRUDE THROUGH AFTER ASSEMBLY (APPROX 6 INCHES).
- USE CARE WHEN REMOVING BASE FROM CRATE NOT TO DRAG TOP SURFACE ACROSS METAL BRACKETS CAUSING DAMAGE TO FINISH.
- INSERT LEGS AND FOOT PLATE. WHEELED LEGS ARE LOADED OPPOSITE THE BASE HANDLES.
- INSERT 6X 1" QUICK RELEASE PINS AS SHOWN TO SECURE LEGS AND FOOTPLATE.
- REMOVE RUBBER SHIPPING CAPS FROM BAND PEGS ON FOOT PLATE AND LOAD PIN.



REMOVE AND DISCARD CAPS

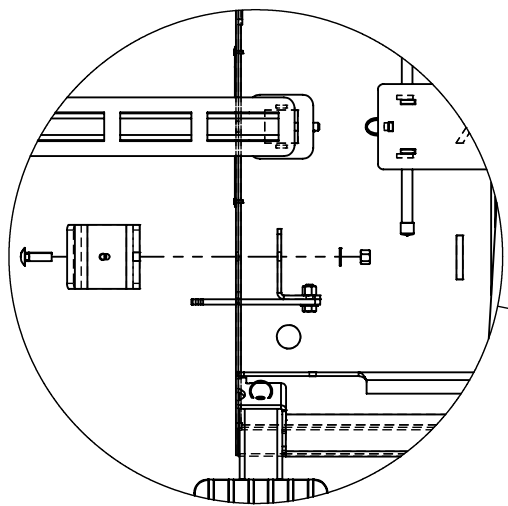


	NAME	DATE		
DRAWN	KW	2/27/2025		
CHECKED			TITLE:	
COMMENTS:			SQUATMAX PRO ASSEMBLY STEP 1	
			SIZE A	DWG. NO. 713038
			SCALE: 1:18	WEIGHT: 169.9768 SHEET 1 OF 3
			REV -	

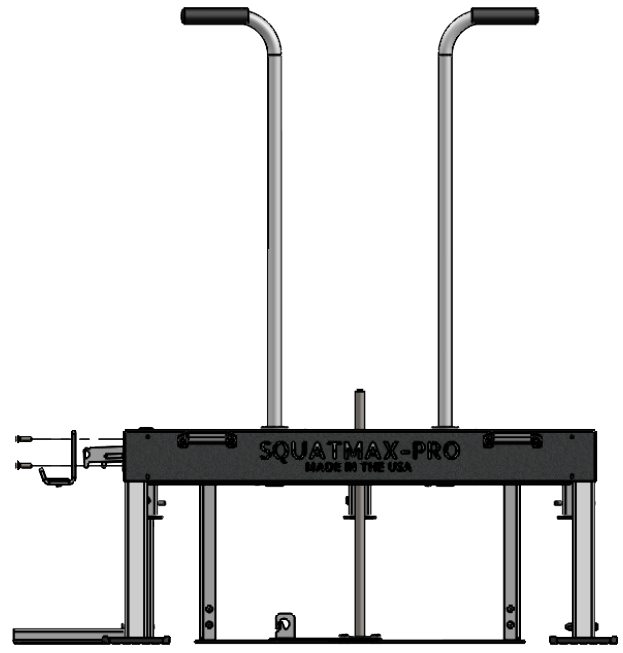
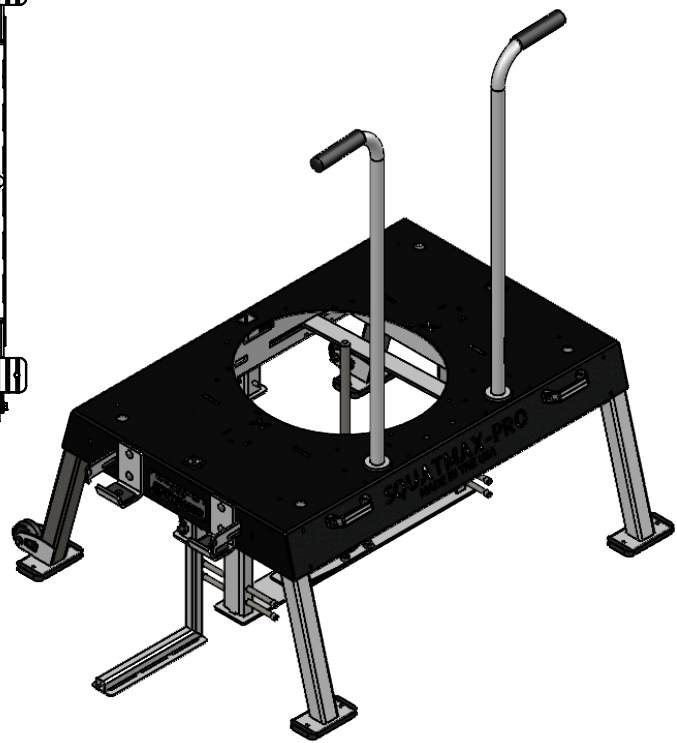
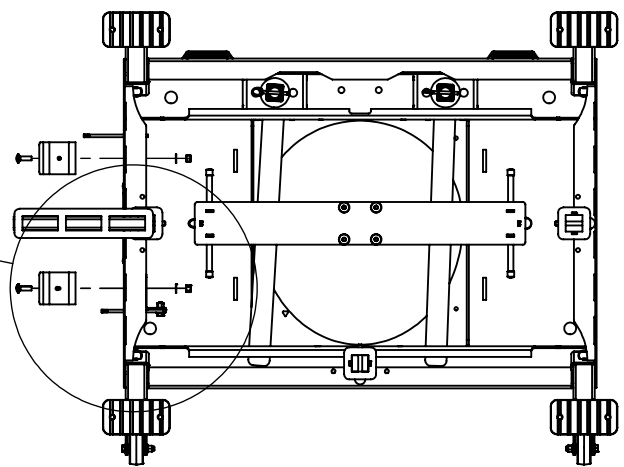



STEP 3:

- ATTACH J-CUPS TO BASE. BAR RETAINERS AND BOLTS ARE PREINSTALLED, BUT J-CUPS ARE REMOVED FOR SHIPPING. REMOVE 4X CARRIAGE BOLTS AND NYLOC NUTS FROM INSIDE OF BASE AND INSTALL J-CUPS. 9/16" WRENCH/SOCKET IS REQUIRED TO TIGHTEN NUTS.
- CHECK THAT BAR RETAINERS SLIDE FREELY AFTER ATTACHING J-CUPS. IF THERE IS BINDING IT MAY BE NECESSARY TO LOOSEN BOLTS AND REPOSITION SO BARS ARE CENTERED IN SLOT.



DETAIL B
SCALE 1:9



	NAME	DATE		
DRAWN	KW	2/27/2025		
CHECKED			TITLE:	
COMMENTS:			SQUATMAX PRO ASSEMBLY STEP 3	
			SIZE A	DWG. NO. 713038
				REV -
			SCALE: 1:18 WEIGHT: 199.177 SHEET 3 OF 3	